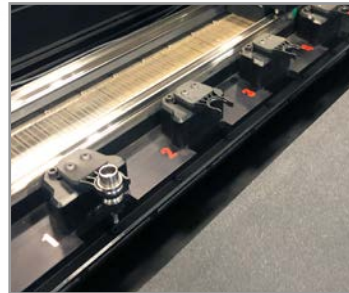


Unparalleled Router & Knife Capabilities

MultiCam's Celero 7 Series Digital Cutting System is designed to provide end-users unparalleled router and knife cutting capabilities. With one of the industry's fastest knife cutting speeds, as well as the industry's most precise digital registration, this programmable flatbed cutting system maximizes throughput and production capabilities while seamlessly incorporating into existing workflows. Whether your business is cutting Foamcore, Coroplast, Styrene, Acrylic, Metals, or other substrates, the Celero 7 Series will provide years of quality cutting and reliable performance.



Automatic Tool Changer Router & Knife Changer

The Automatic Tool Change System can be configured to hold up to 18 tools; nine (9) router bits and nine (9) knives. Designed to automatically change between knife and router cutting tools in a single job file along with auto hands-free surface probe and tool calibration sensor.



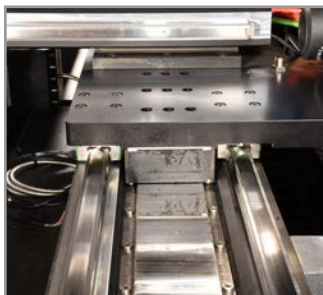
Base Frame Steel Constructed Table

Built with a durable U.S. steel frame, which is stress relieved and precisely machined to significantly reduce vibration. This gives the operator tight control for precise knife cutting and routing.



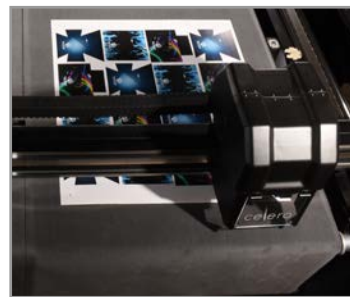
Router Spindle 50,000 RPM Spindle

The Celero 7 Series is designed for routing rigid materials at high-speeds as it comes standard with a liquid cooled 4 HP/50,000 RPM pneumatic chuck spindle.



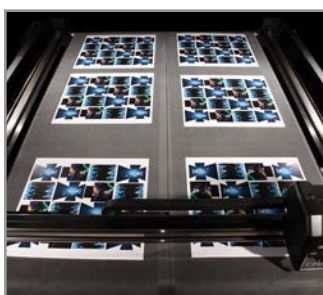
Linear Motors Higher Productivity

With integrated Linear Motors, the Celero 7 Series is capable of reaching an acceleration of up to 1.2 G's which translates to the industry's fastest knife cutting speeds of 7,800 Inches per Minute (IPM).



Conveyor System Reduced Indexing

For all your textile, vinyl, and other roll applications, the Celero 7 wide format bed size option allows to cut more without indexing.



Multi-Board Workflow Wide Format Digital Cutter

The Celero 7 Series is offered in a variety of table sizes up to 10' x 13', which allows end-users to setup three 4'x8' sheets of material for continuous cutting.



Vacuum Zones Maximum Material Hold Down

With up to 12 vacuum zones (Celero 7324c), and the strength of the 20HP vacuum, the Celero 7 can hold down acrylic, dibond, and other heavy substrates, even when routing small details at high speeds.



EZ Control

Powerful, Intuitive Control

MultiCam's EZ Control provides all users, from novice to advanced, with the most powerful and easy-to-use control system available on today's market. New operators can be productive in as little as an hour!



Coreo Software

Workflow Management

The Celero 7 Series comes standard with Coreo software, allowing for simple integration into your existing workflow.



MultiVision System

Accurate Cut Path Everytime

Provides end-users additional flexibility as the camera system is able to visually recognize media registration marks and automatically compensate for skew and/or image drift.



Laser Pointer

Decrease Job Set-Up Times

Quickly and accurately identify reference points on the material to minimize job set-up time.

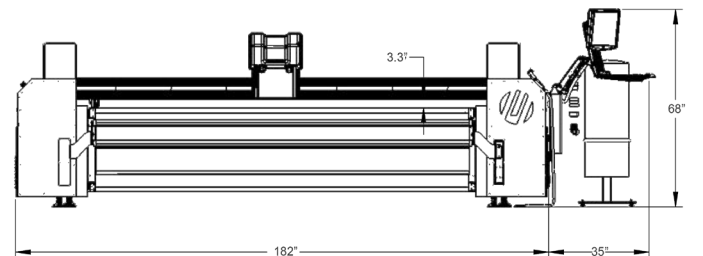
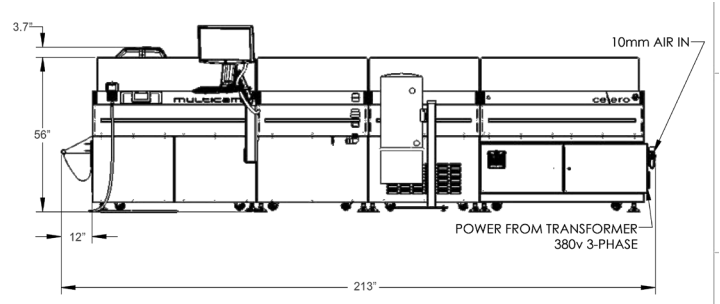
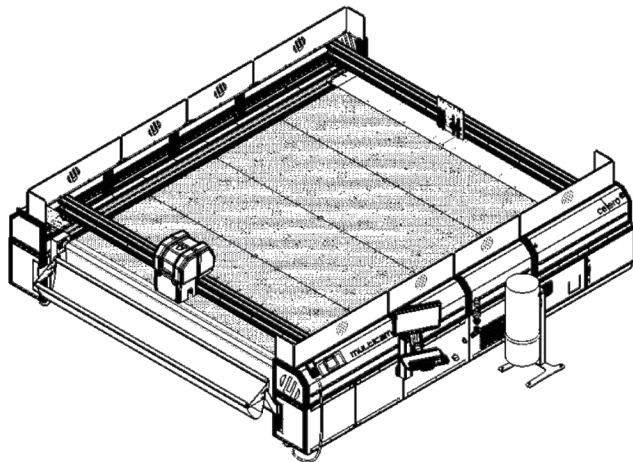
Options:

- Passive Roll to Basket System
- Additional Tool Change Capacity
 - Knife Tool
 - Creasing Wheels
 - Driven Rotary Tool
- 20 HP Vacuum (Standard on 7324c, all other models come standard with 15 HP)

Specifications	Inches	Metric
Cutting Speed	7800 IPM	3302 mm/sec
Rapid Traverse	11030 IPM	4669.3 mm/sec
Max Acceleration	450 in./sec ²	11430 mm/sec ²
Repeatability	+/-0.001"	+/-0.025mm
Max Material Thickness	2"	50.8mm
Drive System (X,Y)	Linear Servo	Linear Servo
Drive System (Z)	Ball Screw	Ball Screw

Model	Inches	Metric
7153	60" x 120"	1524mm x 3048mm
7153c Conveyor	60" x 120"	1524mm x 3048mm
7322	127" x 78.74"	3226mm x 2000mm
7322c Conveyor	127" x 78.74"	3226mm x 2000mm
7324c Conveyor	127" x 157"	3226mm x 3988mm

Specifications subject to change without notice.



Dimensions are based on 7324c Model

For Tooling & Consumables visit MultiCamTooling.com

